

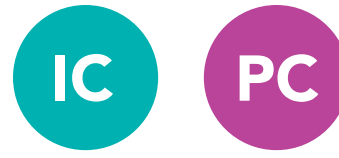
Consultant Benefits

- 35% commissions on retail clients
- 15% commissions on *personal* preferred clients
- Pay full retail tax on products
- Your PC's count towards your PQV too

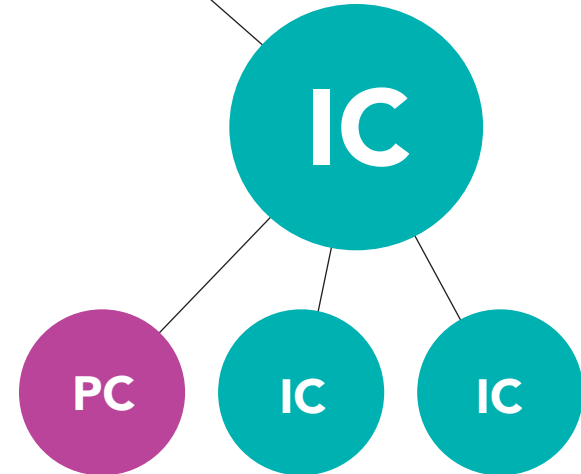
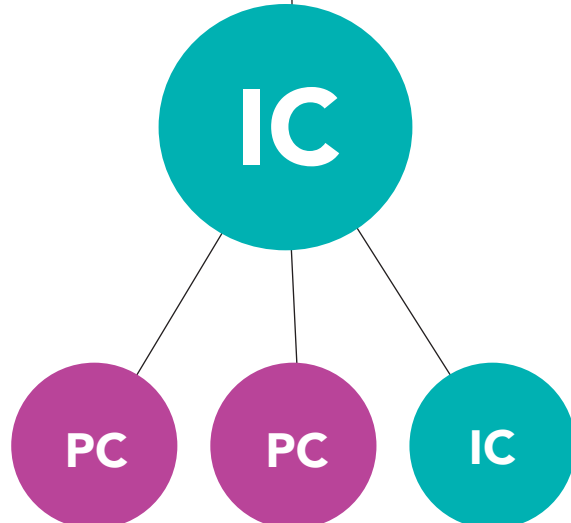
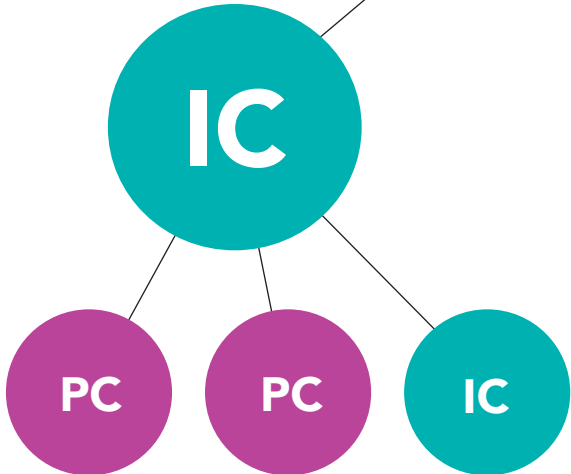
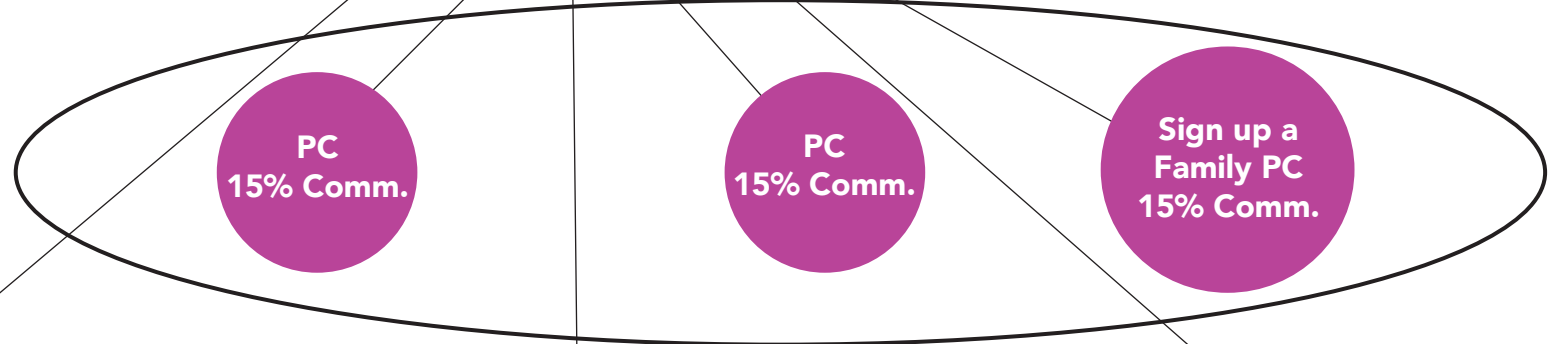
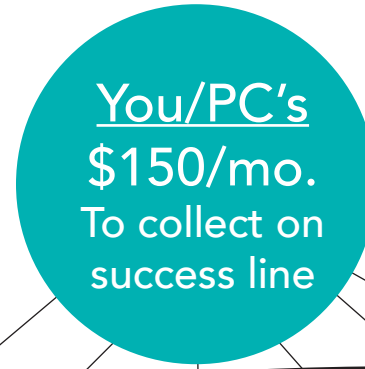
NOTE: You make zero \$ on Personal IC's

0% O.R.
0% commissions
You can use ALL volume to promote DM!

Your **ONLY** income as an IC is on Personally Sponsored PC's at Consultant Level!



Consultant



To Qualify for District Manager

- \$2500/month minimum group volume
- Total volume of \$6000 in 1 or 2 months or \$7500 in 3 months
- You count volume off of entire success line to promote to DM, but only get paid on personally sponsored consultants
- Need \$1000 PQV during qualification period